

LD5321C/D Series - 0.54 inch Dual Digit 14 Segment LED Display



ATTENTION
OBSERVE PRECAUTIONS
FOR HANDLING
ELECTROSTATIC
DISCHARGE
SENSITIVE
DEVICES



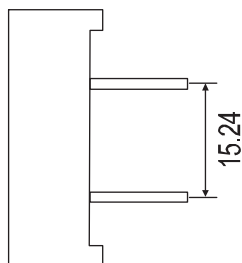
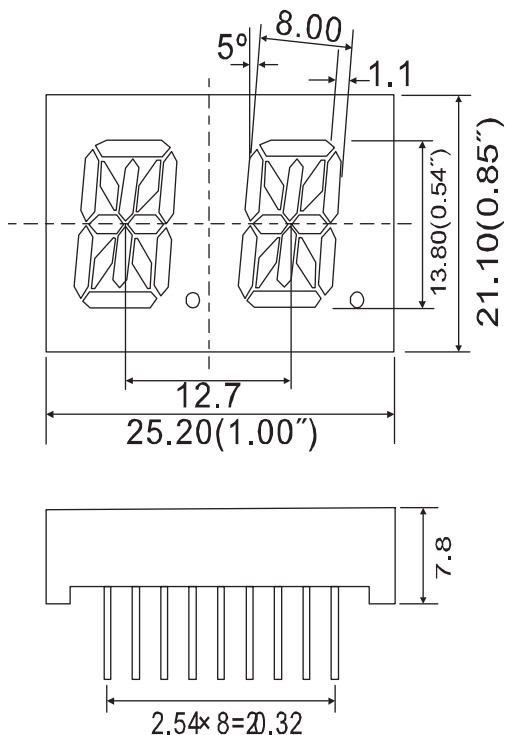
Features

- 13.80 mm (0.54 inch) digit high
- Excellent digit appearance
- Wide viewing angle
- Range of emitted colors
- I.C. compatible
- Low power consumption
- White segment, black face
- RoHS compliant

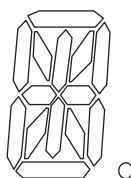
Available options

- Alternative emitting luminosity:
Standard or high brightness version
- Alternative emitted color
- Alternative face and segment color
- Alternative font
- Both CA and CC versions are available
- Cropped terminal pins

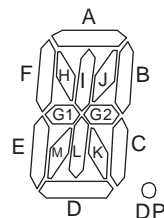
Package Dimensions



DIG. 1



DIG. 2

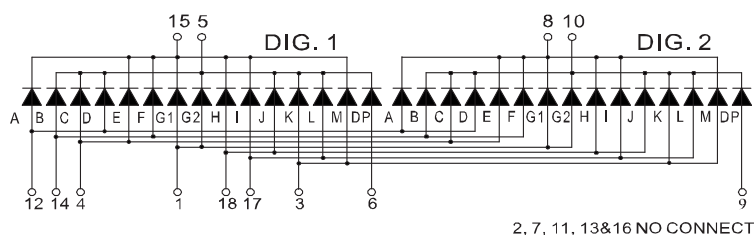


Notes:

1. All dimensions are in millimeters (inches), Tolerance is $\pm 0.25\text{mm}$ (0.01inch) unless otherwise noted.
2. Specifications are subject to change without notice.
3. The gap between the reflector and PCB shall not exceed 0.25mm.

Internal Circuit Diagram

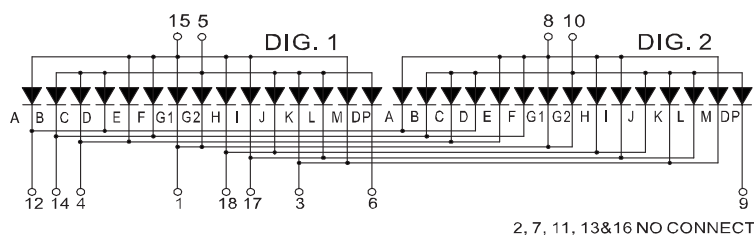
LD5321C



2, 7, 11, 13&16 NO CONNECT

LD5321D

CODE L1



2, 7, 11, 13&16 NO CONNECT

CODE I1

Selection Guide

Dual Digit 14 Segment LED Display, Digit Height: 13.80mm(0.54inch), External Dimensions: 25.20x21.10x7.80mm (L x W x H)

Part No.		Chip			Iv@IF=20mA		Iv@IF=20mA	
Common Cathode	Common Anode	Material	Color	WLD	One Seg		One DP	
					Min.	Typ.	Min.	Typ.
LD5321CR	LD5321DR	GaAlAs	Super Red	640	8	10	8	10
LD5321CD	LD5321DD	GaAlAs	Hi-Red	640	18	25	18	25
LD5321CO	LD5321DO	GaAsP	Orange	625	7	9	7	9
LD5321CY	LD5321DY	GaAsP	Yellow	588	8	10	8	10
LD5321CG	LD5321DG	GaP	Green	568	7	9	7	9
LD5321CUR	LD5321DUR	AlGaInP	Ultra Red	640	30	45	30	45
LD5321CUO	LD5321DUO	AlGaInP	Ultra Orange	625	45	60	45	60
LD5321CUA	LD5321DUA	AlGaInP	Ultra Amber	65	30	45	30	45
LD5321CUY	LD5321DUY	AlGaInP	Ultra Yellow	595	30	45	30	45
LD5321CUG	LD5321DUG	AlGaInP	Ultra Green	573	30	45	30	45
LD5321CPG	LD5321DPG	InGaN	Pure Green	525	120	300	120	300
LD5321CUB	LD5321DUB	InGaN	Ultra Blue	470	30	45	30	45
LD5321CUW	LD5321DUW	InGaN	Ultra White	\	100	120	100	120
Unit:	\	\	\	nm	mcd	mcd	mcd	mcd

Electrical Characteristics & Absolute Maximum Ratings

Parameter		Electrical optical Characteristics ^[1]			Absolute Maximum Ratings ^[1]		
Emitted color		Forward Voltage @ IF=20mA		Reverse Current VR=5V	Power Dissipation	DC Forward Current	Peak Forward Current ^[2]
		Typ.	Max.				
Super Red	Per Seg.	1.8	2.2	30	60	25	100
	Per DP	1.8	2.2	30	60	25	100
Hi-Red	Per Seg.	1.8	2.2	30	60	25	100
	Per DP	1.8	2.2	30	60	25	100
Orange	Per Seg.	2.1	2.5	30	80	30	100
	Per DP	2.1	2.5	30	80	30	100
Yellow	Per Seg.	2.1	2.5	30	80	30	100
	Per DP	2.1	2.5	30	80	30	100
Green	Per Seg.	2.2	2.5	30	80	30	100
	Per DP	2.2	2.5	30	80	30	100
Ultra Red	Per Seg.	1.9	2.6	30	60	30	100
	Per DP	1.9	2.6	30	60	30	100
Ultra Orange	Per Seg.	2	2.6	30	65	30	100
	Per DP	2	2.6	30	65	30	100
Ultra Amber	Per Seg.	2	2.6	30	65	30	100
	Per DP	2	2.6	30	65	30	100
Ultra Yellow	Per Seg.	2	2.6	30	65	30	100
	Per DP	2	2.6	30	65	30	100
Ultra Green	Per Seg.	2.1	2.6	30	75	30	100
	Per DP	2.1	2.6	30	75	30	100
Pure Green	Per Seg.	3.5	4	30	110	30	100
	Per DP	3.5	4	30	110	30	100
Ultra Blue	Per Seg.	3.5	4	30	120	30	100
	Per DP	3.5	4	30	120	30	100
Ultra White	Per Seg.	3.5	4	30	120	30	100
	Per DP	3.5	4	30	120	30	100
Unit:	\	V	V	uA	mW	mA	mA

Notes:

1. At Ta = 25 °C.

2. Peak forward current at 1/10 Duty Cycle, 0.1ms Pulse.